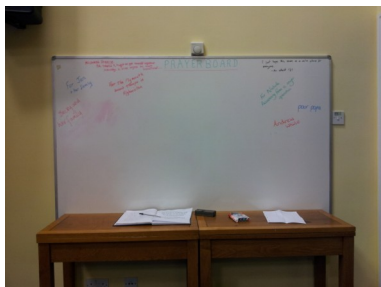


## The Whiteboard

The white board is a public space for anyone to register their prayers. The prayer book offers a more private means and is used in intercessions in the college Eucharist.



## Icons.

The first of the two icons depicts Shadrach, Meshach and Abednego, in Daniel 1-3. Created by Lillian Delevoyes in memory of Roland Randolph Lawson, a former student.



The second depicts the virgin Mary with baby Jesus. It was presented to the college by the Loizaidou family in thanks to the Learning Development team.

**If you require any more information on the history of the Chaplaincy, or would like to know about what goes on here, feel free to contact us.**

Chaplaincy contact details;

**Rev. Paul Thompson;**

(01752) 636700 Ext 2047

[Pthompson@marjon.ac.uk](mailto:Pthompson@marjon.ac.uk)

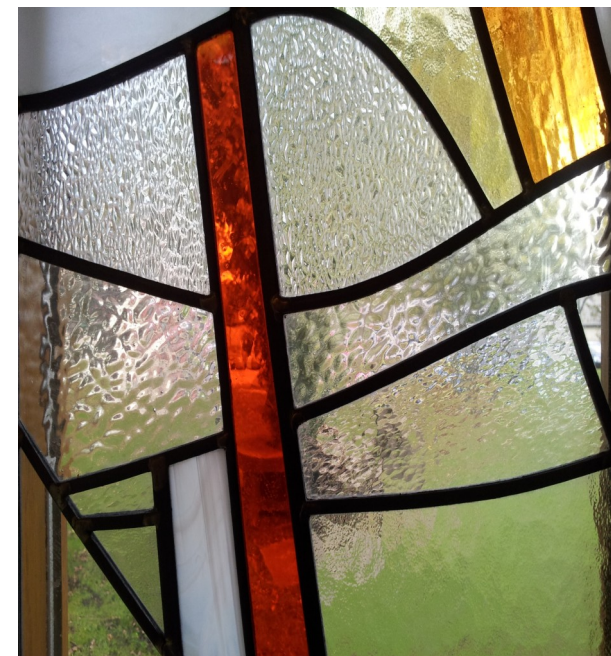
**The chaplaincy office;**

(01752) 636700 Ext 6528

[Chaplaincy@marjon.ac.uk](mailto:Chaplaincy@marjon.ac.uk)

**University**

**College Plymouth,  
St Mark and St John,  
Chaplaincy Centre.**



***...at the heart of the  
University College.***

## The Chaplaincy centre.

The Chaplaincy centre has stood at the heart of the college since May 1994.



The unique octagonal shape of the building

reflects octagonal teaching buildings at previous Marjon sites and creates a worship place of distinction, as well as somewhere to chat, socialize and rest.

## The Communion table.

The communion table, upon its raised dais, is at the central point of the main



chaplaincy building. The shape and position of the table is designed to enable communion to be administered around all of its sides.

## The stained glass windows.

The stained glass windows were designed by Michael Laxton, formerly of the colleges Art and Design dept. They were inspired by the phrase in the lords prayer '*for thine is the Kingdom, the Power and the Glory*'.



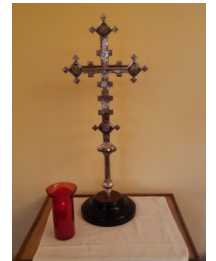
## The organ.

The organ stands in memory of Keith Laity, a former member of staff, whose love of music and worship was unrivalled. It was built in 1821 by H.C Lincoln and purchased as a memorial in 2008.



## The Candles and Cross.

Both the candles and the silver cross have survived the many transitions the University College, and the chaplaincy, have gone through. Both come from the Colleges previous home in Chelsea, London. The cross stands in memory of William Peter



Wakefield and bears the symbols of all four gospels.

## The wooden cross.



Having survived the recent fire, the wooden cross has taken on a darker hue, but still stands to remind us of the sacrifice of Christ on the Cross. It was created by students from local pieces of driftwood.